

S.M.A.R.T.

Setting up and using the Graphtec
cutters with the MagiCut SMART
system

Blocking the rear Sensor

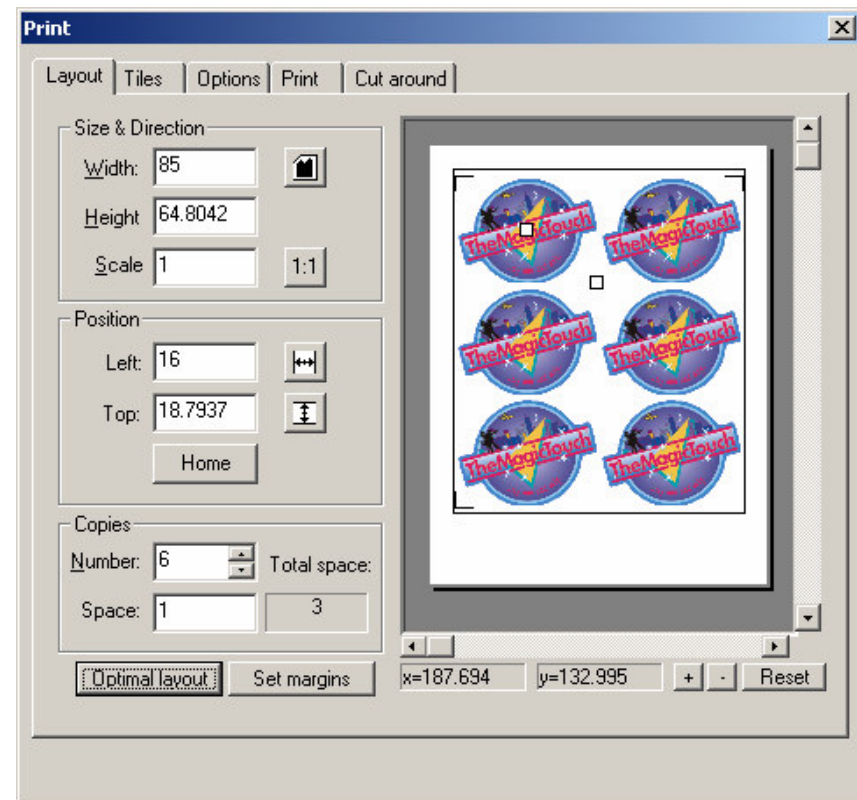
- For the Graphtec to use the maximum area, please block the rear paper sensor with a strip of tape.
- The sensor is directly behind the front sensor in the rear cover.
- Once done the sheet measure will not work. Use Roll 2 for setting up.

Artwork

- Import or Scan full colour artwork into MagiCut
- Trace or draw the cutline/s for the image
- Intersect the cutline with the image
- Give the cutline a cut-around property
- Add Width and or an Outline as required

Printing

- Enter Print Layout
- Under Options setup the Printer and paper, make sure tri-markers are on.
- Set Marker distance if needed
- Set the Margins for the cutter. Press Optimal layout



Graphtec Margins

- Top 15mm
- Left and right 15mm
- Bottom 45mm

Minimum values are 10 top and sides, and 45 base.

Marker Distance

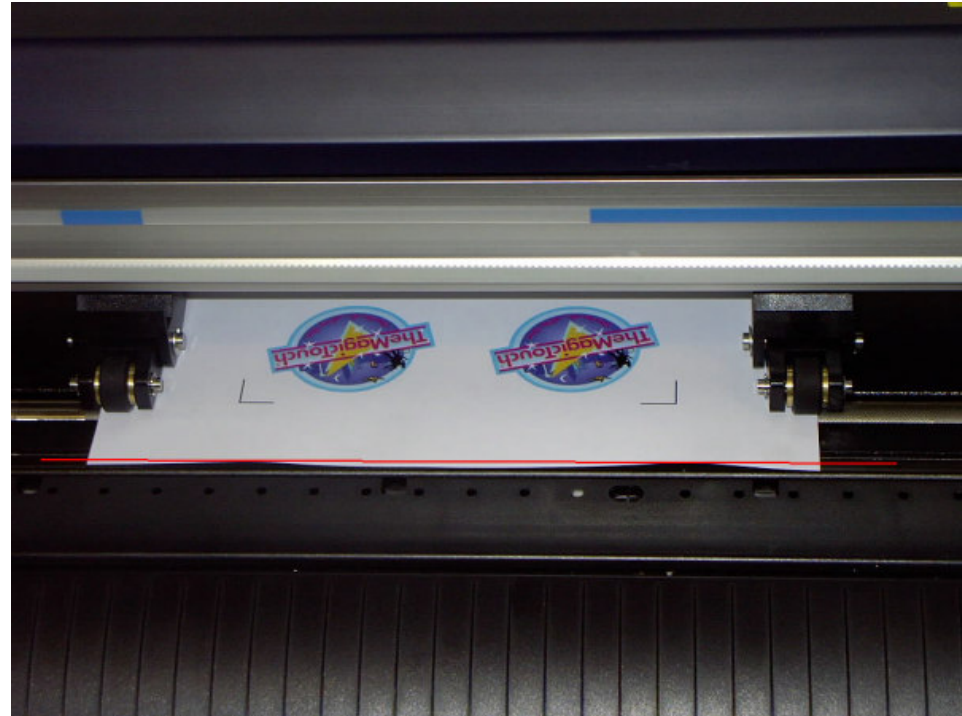
- The marker distance is used to offset the marker from the print. The distance needed will vary from 0 to 6mm depending on the shape of the printed object.
- The worst case is a rectangle, here the print protrudes fully into the marker. A value of 6mm is needed.
- For Circles unless small a value of 0 is needed

Print

- Select print tab and press print
- The result is a image with 3 markers ready for the cutting part of the MagiCut system

Cut Around

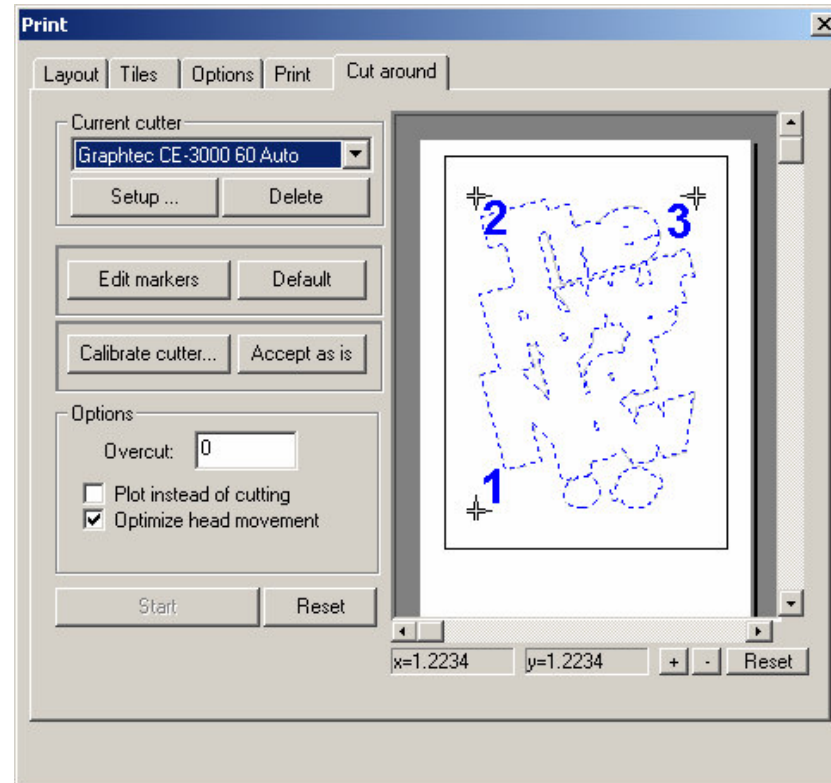
- Place the print in the cutter so the markers are behind the line the head travels.
- The markers must be between the wheels
- The paper should be square for the automatic system to work
- Lower wheels and press enter to initialise



Cut Around

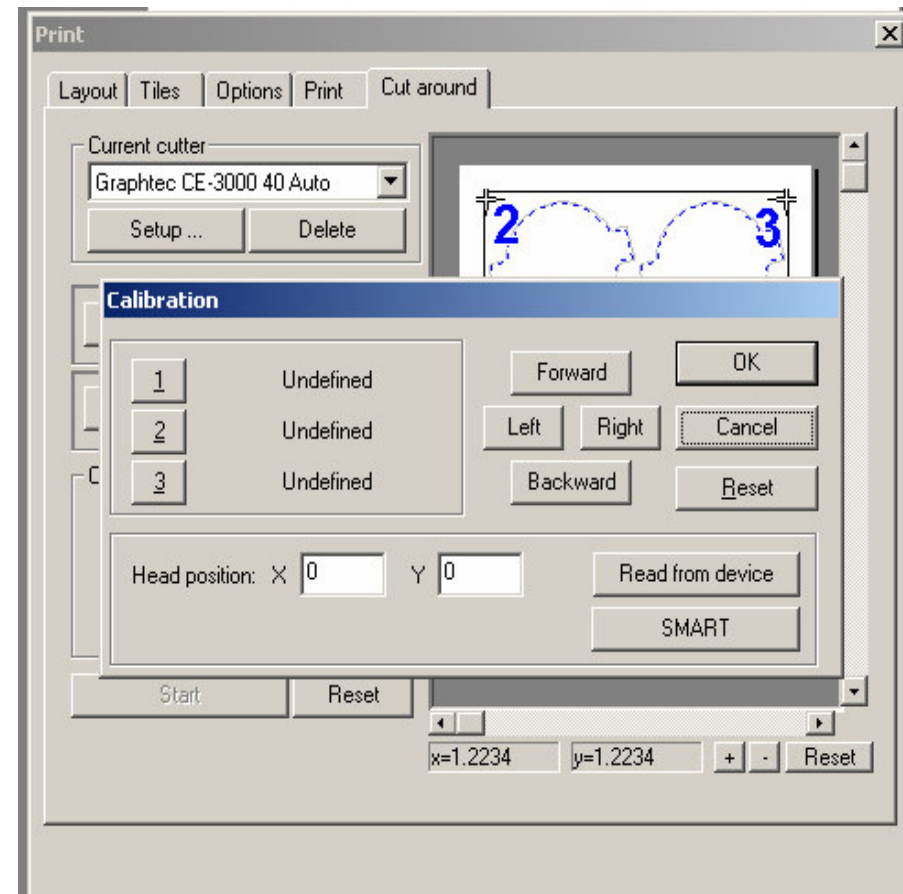
Check there is a blue dotted line displayed in the CutAround dialog. This is the line marked as cut-around in the properties of an object.

If no blue line is visible then there is nothing to cut. After calibration the Start button will remain greyed out.



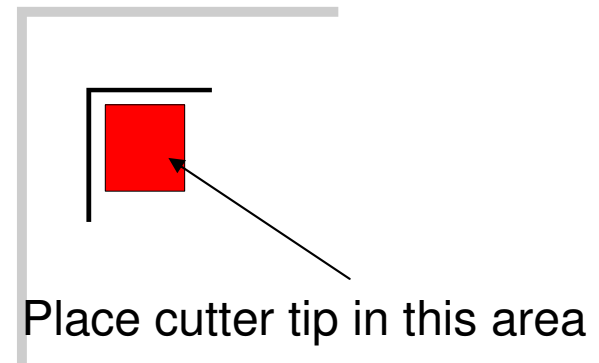
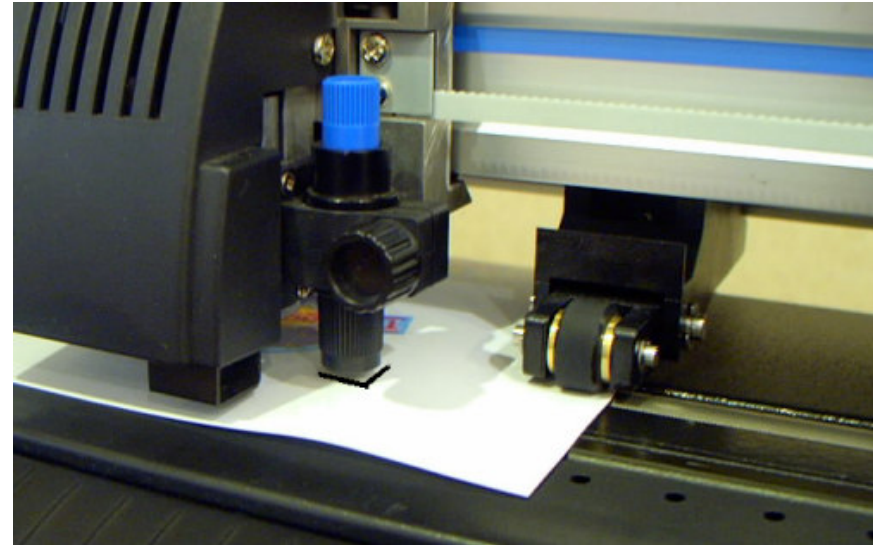
Cut

- Select the cut tab
- Press the calibrate cutter button
- Press the SMART button
- Now move to the Cutter



CUT

- The cutter display will show move to first reg mark, This is the one nearest the cutter head.
- Use the arrow keys on the cutter to move the head
- Press Enter on the cutter when head is in position
- The Cutter will move and read the marks



Cut (2)

- Once all points are measured and the cutter has returned to its origin press OK on the screen
- Co-ordinates will appear against the 1,2,3 buttons
- Click OK then Press start, the decal will cut.
- If the Start button is not available then it is likely no line was selected for cutting.